

GURU NANAK COLLEGE BUDHLADA

(STUDENT SATISFACTION SURVEY REPORT 2017-18)

1. Student Satisfaction Survey on Teaching Learning Process

- Total No. of students evolved in survey 1800(N=1800)

Teaching-Learning and Evaluation

Sr. No	Contents	Very Poor	Poor	Average	Good	Excellent
1.	Teachers have good communication skills.	0	0	251	1169	380
2.	Teachers always complete their syllabus within stipulated time period.	0	12	322	1274	192
3	Are the syllabi adequate according to the job role?	0	0	256	1345	199
4	Is the internal evaluation process of students is fair?	0	0	34	566	1200
5	Are you provided with assignments by your concerned teachers?	0	0	0	666	1134
6	Was your performance related to assignments discussed with you?	0	0	400	657	743
7	Teachers inform you about your expected competencies, course and programme outcomes.	23	38	345	789	605
8	The teachers illustrate the concepts through relevant examples and applications.	12	33	126	1100	529
9	Teachers are able to identify your weaknesses and help you to overcome them.	23	34	223	980	540
10	Teachers encourage you to participate in extra/curricular activities.	0	0	34	678	1088
11	Are the teachers regularly use ICT tools such as LCD projector, Multimedia, etc. while teaching.	400	124	657	234	385
12	Is the overall quality of teaching-learning process is good in your institution?	23	45	445	456	831



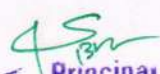

Principal
Guru Nanak College
BUDHLADA

Table 1.1 **Teachers have good communication skills. (N=1800)**

Sr. No	Criteria	Number of Students	% age
1	Very Poor	0	0%
2	Poor	0	0%
3	Average	251	13.94%
4	Good	1169	64.94%
5	Excellent	380	21.11%



Interpretation: It is analyzed from above table is that 64.94% students said that, Teachers have good communication skills and 21.11% said it is excellent.

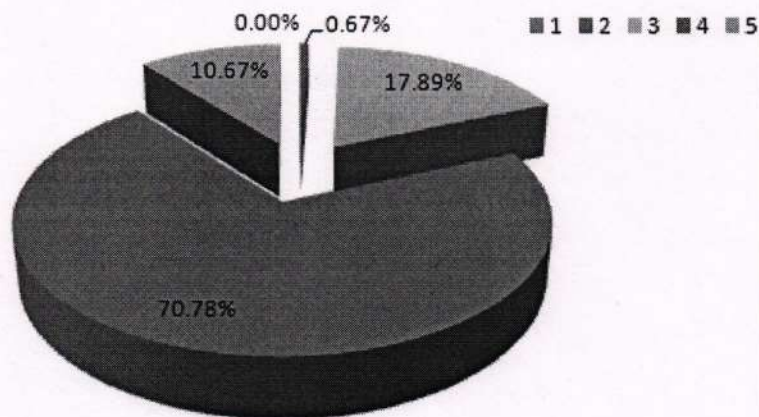



Principal
Guru Nanak College
BUDHLADA

**Table 1.2 Teachers always complete their syllabus with in time.
(N=1800)**

Sr. No	Criteria	Number of Students	% age
1	Very Poor	0	0.00%
2	Poor	12	0.67%
3	Average	322	17.89%
4	Good	1274	70.78%
5	Excellent	192	10.67%

Teachers always complete their syllabus with in time



Interpretation: It is analyzed from above table is that 70.78% students said that, Efficiency of teacher to complete their syllabus is good and 10.67% said that it is excellent

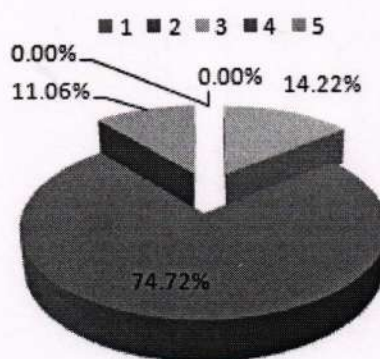


[Signature]
Principal
Guru Nanak College
BUDHLADA

**Table 1.3 Is syllabus is adequate according to job role?
(N=1800)**

Sr. No	Criteria	Number of Students	% age
1	Very Poor	0	0.00%
2	Poor	0	0.00%
3	Average	256	14.22%
4	Good	1345	74.72%
5	Excellent	199	11.06%

**Is syllabus is adequate according to
job role?**



Interpretation: It is analyzed from above table is that 74.72 % students said that, syllabus layout is good according to job role but 11.06% said it is excellent according to job role.

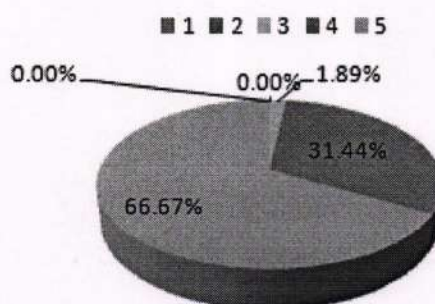


[Signature]
Principal
Guru Nanak College
BUDHLADA

Table 1.4 Is the internal evaluation process of students is fair?(N=1800)

Sr. No	Criteria	Number of Students	% age
1	Very Poor	0	0%
2	Poor	0	0%
3	Average	34	1.89%
4	Good	566	31.44%
5	Excellent	1200	66.67%

Is the internal evaluation process of students syllabus is fair adequate according to job role?



Interpretation: It is analyzed from above table, 66.67% students are strongly agree with fairness of internal evaluation process, 31.44% said that it is good and 1.89% said it is average.

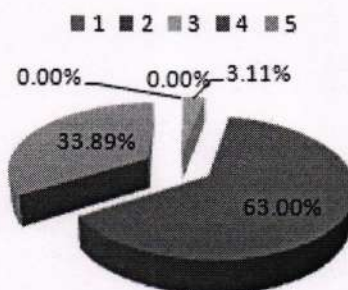


Principal
Principal
Guru Nanak College
BUDHLADA

Table 1.5-Is the Teacher provides subject assignments to the students regularly? (N=1800)

Sr. No	Criteria	Number of Students	% age
1	Very Poor	0	0.00%
2	Poor	0	0.00%
3	Average	56	3.10%
4	Good	1134	63%
5	Excellent	610	33.89%

Is the Teacher provides subject assignments to the students regularly?



Interpretation: It is analyzed from above table that 33.89% students are strongly agree with this question, 63.00% said that process of assigned assignments to the student is good and 3.11 said that it is average.

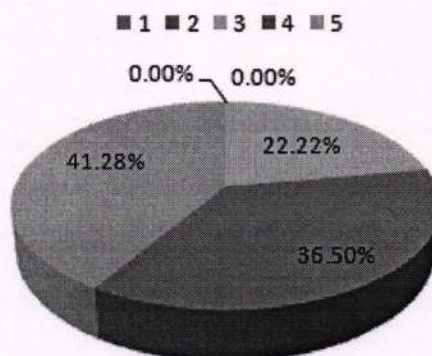


AS
Principal
Guru Nanak College
BUDHLADA

Table 1.6- Was your performance in assignments discussed with you? (N=1800)

Sr. No	Criteria	Number of Students	% age
1	Very Poor	0	0%
2	Poor	0	0%
3	Average	400	22.22%
4	Good	657	36.50%
5	Excellent	743	41.28%

Was your performance in assignments discussed with you?



Interpretation: Above table analyzed that 41.28% students strongly agreed with this factor, 36.50% said sometimes their teachers discussed their assignment performance with them and 22.22% said that it is not always occurs.

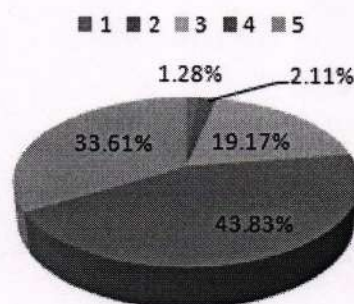


A. S. B.
Principal
Guru Nanak College
BUDHLADA

Table 1.7-Teachers inform you about your expected competencies, course outcomes and programme outcomes. (N=1800)

Sr. No	Criteria	Number of Students	% age
1	Very Poor	23	1.28%
2	Poor	38	2.11%
3	Average	345	19.17%
4	Good	789	43.83%
5	Excellent	605	33.61%

Teachers inform you about your expected competencies, course outcomes and programme outcomes.



Interpretation: It is analyzed from the table, 33.61% students said that their teachers always informed them about course and programme outcomes, 43.83% said this process is good and 19.17% said it is average.

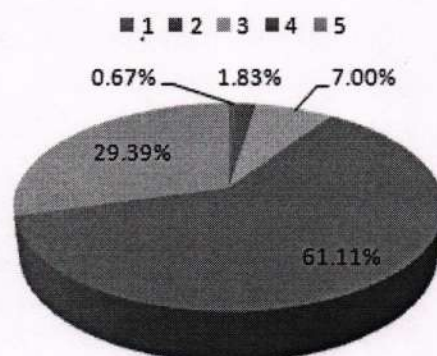


Principal
Guru Nanak College
BUDHLADA

Table 1.8- The teachers illustrate the concepts through examples and applications.(N=1800)

Sr. No	Criteria	Number of Students	% age
1	Very Poor	12	0.67%
2	Poor	33	1.83%
3	Average	126	7.00%
4	Good	1100	61.11%
5	Excellent	529	29.39%

Teachers illustrate the concepts through examples and applications.



Interpretation: It is analyzed from the above table that 29.39% students strongly agreed that their teachers always illustrate the concept through examples, 61.11% said this process occurs at good level and 7.00% said it is at average.

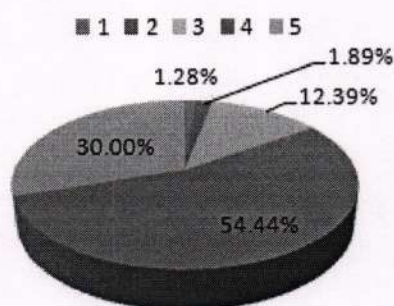


Principal
Guru Nanak College
BUDHLADA

Table 1.9-Teachers are able to identify your weaknesses and help you to overcome them.(N=1800)

Sr. No	Criteria	Number of Students	% age
1	Very Poor	23	1.28%
2	Poor	34	1.89%
3	Average	223	12.39%
4	Good	980	54.44%
5	Excellent	540	30.00%

Teachers are able to identify your weaknesses and help you to overcome them.



Interpretation: It is analyzed from the above table, 30.00% students strongly agreed that their teachers always overcome their problems, 54.44% said it happens at good level and 12.39% said this process happen at average level.

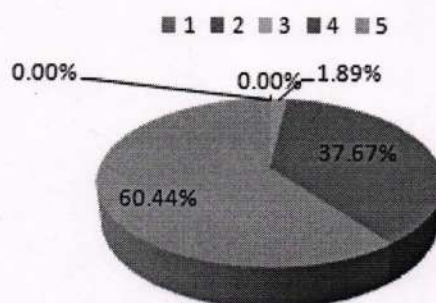


ASB
Principal
Guru Nanak College
BUDHLADA

Table 1.10-Teachers encourage you to participate in extracurricular activities.(N=1800)

Sr. No	Criteria	Number of Students	% age
1	Very Poor	0	0.00%
2	Poor	0	0.00%
3	Average	34	1.89%
4	Good	678	37.67%
5	Excellent	1088	60.44%

Teachers encourage you to participate in extracurricular activities.



Interpretation: This is analyzed from the table that 60.44% students agreed that their teachers always encourage them to participate in extracurricular activities, 37.67% said it is good and 1.89% said that it is not always happen. It happens at average level.

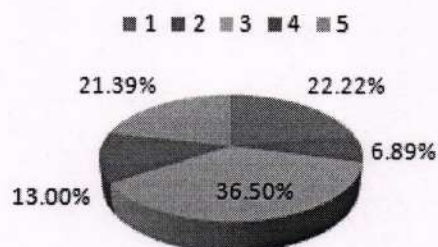


AS
Principal
Guru Nanak College
BUDHLADA

Table 1.11-Are the teachers regularly uses ICT tools such as LCD projector, Multimedia, etc. while Teaching.(N=1800)

Sr. No	Criteria	Number of Students	% age
1	Very Poor	400	22.22%
2	Poor	124	6.89%
3	Average	657	36.50%
4	Good	234	13.00%
5	Excellent	385	21.39%

Are the teachers regularly uses ICT tools such as LCD projector, Multimedia, etc. while Teaching.



Interpretation: From the above table it is analyzed that 21.39% students said that their teacher's efficiency to use ICT tools is excellent , 13.00% said it is good, 36.50% said it is at average level & 29.11% said their efficiency to use ICT tools is poor.

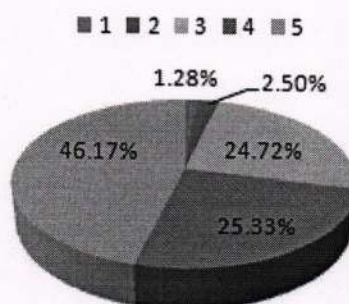


Principal
Guru Nanak College
BUDHLADA

Table 1.12-Is the overall quality of teaching-learning process in your institute is good?(N=1800)

Sr. No	Criteria	Number of Students	% age
1	Very Poor	23	1.28%
2	Poor	45	2.50%
3	Average	445	24.72%
4	Good	456	25.33%
5	Excellent	831	46.17%

Is the overall quality of teaching-learning process in your institute is good?



Interpretation: 46.17% students said, Overall quality of teacher-learning process is excellent, 25.33% said that it is good, 24.72% said it is average and 3.78% said it is at poor level.



Principal
Guru Nanak College
BUDHLADA

2. Student Satisfaction Survey related to Infrastructure and overall performance of institution.

- Total No. of students evolved in survey 1800 (N=1800)

Sr. No	Contents	Very Poor	Poor	Average	Good	Excellent
1.	Tools and equipment work properly in the institution.	37	121	887	568	187
2.	Sufficient teaching aids are available in your institution.	23	97	567	985	128
3	The institution provides multiple opportunities to learn and grow.	46	156	448	997	153
4	Computers and network work properly.	55	98	667	889	91
5	Classroom arrangement is well organized.	25	156	586	1012	21
6	Whether the institution provides good seating arrangement?	0	0	134	1278	388
7.	Quality of furniture is good.	0	0	256	1178	366
8.	Whether the institution provides Internet Facility?	0	0	121	1289	390
9.	Is the campus eco-friendly?	0	32	248	1289	231
10.	Are you satisfied with the cleanliness of campus?	0	28	223	1278	271

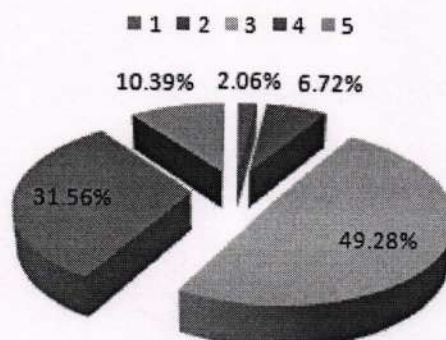


Principal
Guru Nanak College
BUDHLADA

Table 2.1- Tools and equipment work properly in the institution. (N=1800)

Sr. No	Criteria	Number of Students	% age
1	Very Poor	37	2.05%
2	Poor	121	6.72%
3	Average	887	49.28%
4	Good	568	31.56%
5	Excellent	187	10.39%

Tools and equipment work properly in the institution.



Interpretation: 10.39% students said Tools and equipments are in excellent condition, 31.56% said it is good and 49.28% said it is average but 8.77% said tools and equipments are of poor condition.

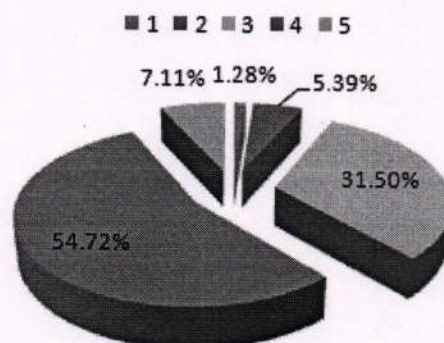


AS
Principal
Guru Nanak College
BUDHLADA

Table 2.2- Sufficient teaching aids are available in your institution. (N=1800)

Sr. No	Criteria	Number of Students	% age
1	Very Poor	23	1.28%
2	Poor	97	5.39%
3	Average	567	31.50%
4	Good	985	54.72%
5	Excellent	128	7.11%

Sufficient teaching aids are available in your institution.



Interpretation: From the above table it is analyzed that 7.11% students said sufficient teaching aids are available in our college, 54.72% said it is good and 31.50% said it is not all but some teaching aids are available but 6.67% (ART students) said no teaching aid is available in our college.

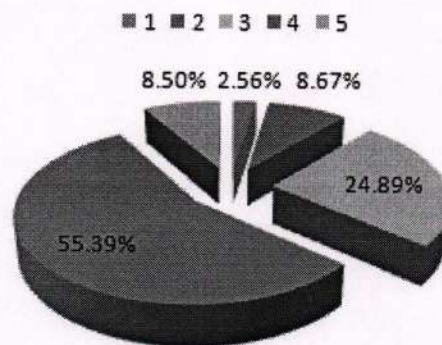


AS
Principal
Guru Nanak College
BUDHLADA

Table 2.3 -The institution provides multiple opportunities to learn and grow.(N=1800)

Sr. No	Criteria	Number of Students	% age
1	Very Poor	46	2.56%
2	Poor	156	8.67%
3	Average	448	24.89%
4	Good	997	55.39%
5	Excellent	153	8.50%

The institution provides multiple opportunities to learn and grow.



Interpretations:-8.50% students said that Institution provides excellent level of opportunities to learn and grow, 55.39% students said it provides good level of opportunities, 24.89% said it provides average level of opportunities but 11.23% students said that no opportunity is provided by institution for learning and grow.

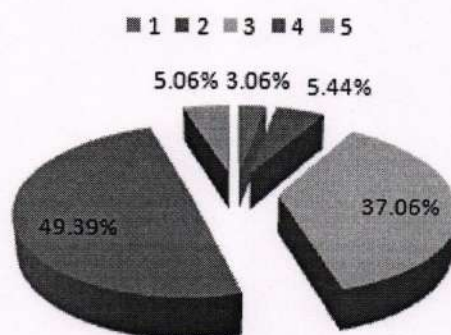


Principal
Guru Nanak College
BUDHLADA

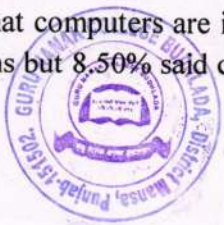
Table 2.4 -Computers and network work properly.(N=1800)

Sr. No	Criteria	Number of Students	% age
1	Very Poor	55	3.06%
2	Poor	98	5.44%
3	Average	667	37.06%
4	Good	889	49.39%
5	Excellent	91	5.06%

Computers and network work properly.



Interpretations:-5.06% students said that Excellent work is performed by computer & network, 49.39% said that computers are in good working conditions, 37.06% said they are of average working conditions but 8.50% said computers and network are in poor work conditions.




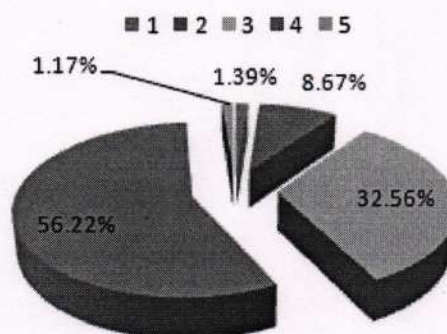

Principal
Guru Nanak College
BUDHLADA

Table 2.5-Classroom arrangement is well organized. (N=1800)			
Sr. No	Criteria	Number of Students	% age
1	Very Poor	25	1.39%
2	Poor	156	8.67%
3	Average	586	32.56%
4	Good	1012	56.22%
5	Excellent	21	1.17%

Classroom arrangement is well organized.



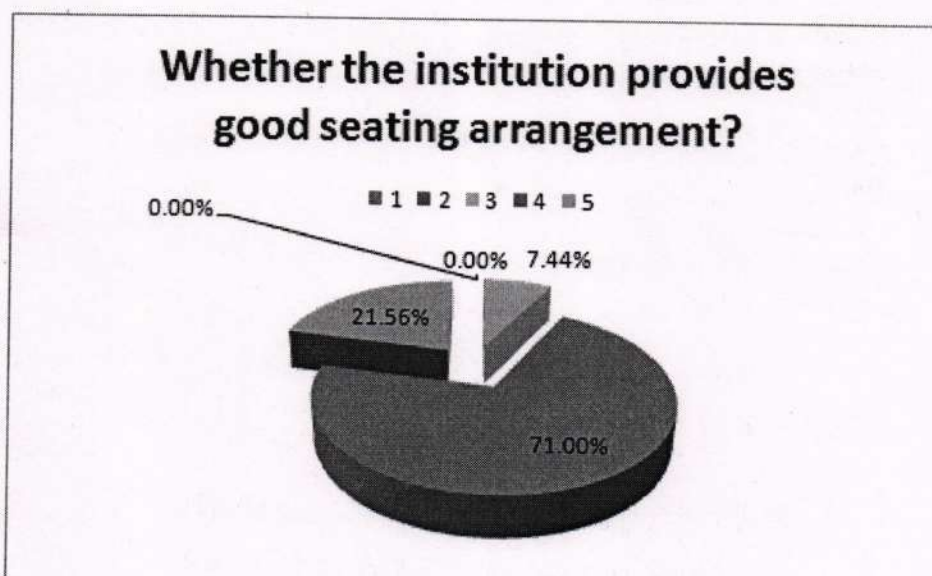
Interpretation: 1.17% students said that there is excellent arrangement of classrooms, 56.22% said it is good, 32.56% said it is average but 10.06 said that it is not well organized.



Principal
Guru Nanak College
BUDHLADA

Table 2.6 Whether the institution provides good seating arrangement? (N=1800)

Sr. No	Criteria	Number of Students	% age
1	Very Poor	0	0.00%
2	Poor	0	0.00%
3	Average	134	7.44%
4	Good	1278	71.00%
5	Excellent	388	21.56%



Interpretations: It is analyzed from the above table that 21.56% students said that institution provides excellent seating arrangement, 71.00% said it is good and 7.44% said it is average.





 Principal
 Guru Nanak College
 BUDHLADA

Table 2.7 Quality of furniture is good.
(N=1800)

Sr. No	Criteria	Number of Students	% age
1	Very Poor	0	0.00%
2	Poor	0	0.00%
3	Average	256	14.22%
4	Good	1178	65.44%
5	Excellent	366	20.33%



Interpretations: 20.33% students said quality of furniture provided by institution is excellent, 65.44% said it is good & 14.22% said it is average.




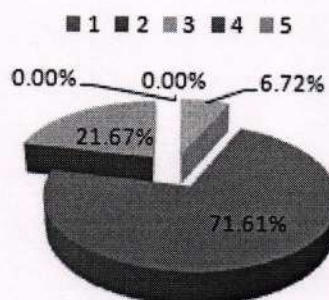

 Principal
 Guru Nanak College
 BUDHLADA

Table 2.8 Whether the institution provides Internet Facility?(N=1800)

Sr. No	Criteria	Number of Students	% age
1	Very Poor	0	0.00%
2	Poor	0	0.00%
3	Average	121	6.72%
4	Good	1289	71.61%
5	Excellent	390	21.67%

Whether the institution provides Internet Facility?



Interpretations: It is analyzed from the table- 21.67% students said that institution provides excellent internet facility to them, 71.61% said it is at good level and 6.72% said it is average.




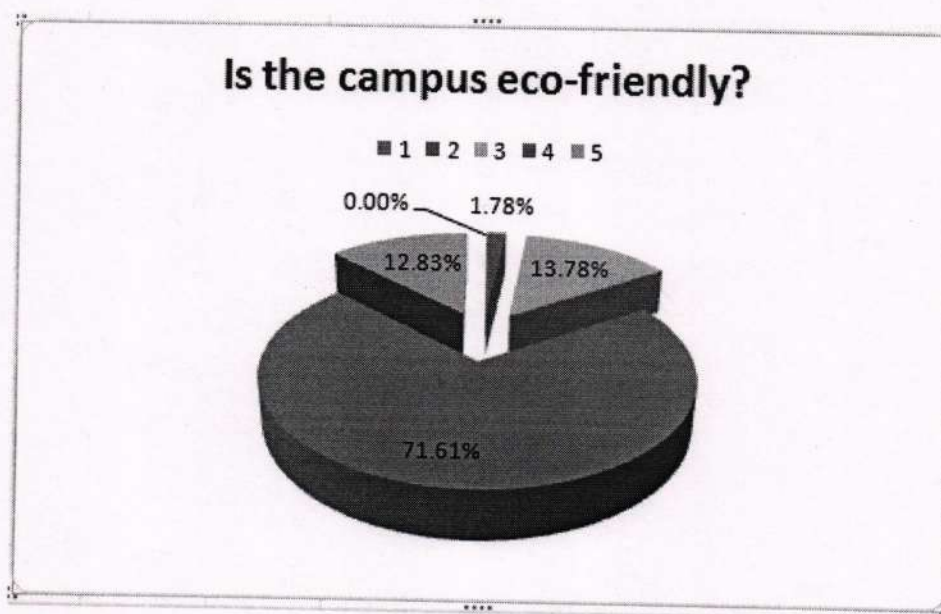

Principal
Guru Nanak College
BUDHLADA

Table 2.9 Is the campus eco-friendly?(N=1800)

Sr. No	Criteria	Number of Students	% age
1	Very Poor	0	0.00%
2	Poor	32	1.78%
3	Average	248	13.78%
4	Good	1289	71.61%
5	Excellent	231	12.83%



Interpretation: 98.22% students agreed with the eco-friendly campus and 1.78% are not agreed.

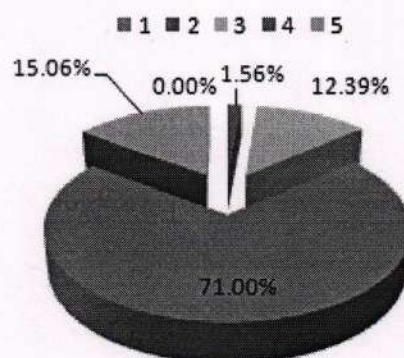


Principal
Guru Nanak College
BUDHLADA

Table 2.10 Are you satisfied with the cleanliness of campus?(N=1800)

Sr. No	Criteria	Number of Students	% age
1	Very Poor	0	0.00%
2	Poor	28	1.56%
3	Average	223	12.39%
4	Good	1278	71.00%
5	Excellent	271	15.06%

Are you satisfied with the cleanliness of campus?



Interpretation:- 15.06% students agreed campus is fully neat & clean, 71.00% said it is good, 12.39% students said it is always not clean and 1.56% students are not satisfied with the cleanliness of campus.



JS
Principal
Guru Nanak College
BUDHLADA

3. ANALYSIS OF HOSTEL FEED BACK FORM (N=50)

Sr. No	Contents	Very Poor	Poor	Average	Good	Excellent
1.	Do you satisfied with the hostel facilities?	0	2	19	20	9
2.	Is the washrooms has enough space to use?	0	3	6	36	5
3	Are you satisfied with the Cleanliness and tidiness?	0	0	8	34	8
4	Are you satisfied with the quality of furniture?	0	5	4	29	12
5	Are you satisfied with the size of rooms?	0	3	2	36	9
6	Availability of hot and cold water.	0	6	10	30	4
7.	Are you satisfied with availability of power?	0	0	15	29	6



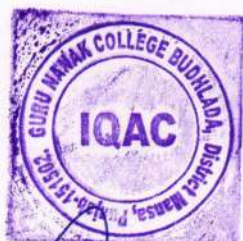
45
Bm
Principal
Guru Nanak College
BUDHLADA

Table 3.1-Do you satisfied with the hostel facilities?
(N=50)

Sr. No	Criteria	Number of Students	% age
1	Very Poor	0	0.00%
2	Poor	2	4.00%
3	Average	19	38.00%
4	Good	20	40.00%
5	Excellent	9	18.00%



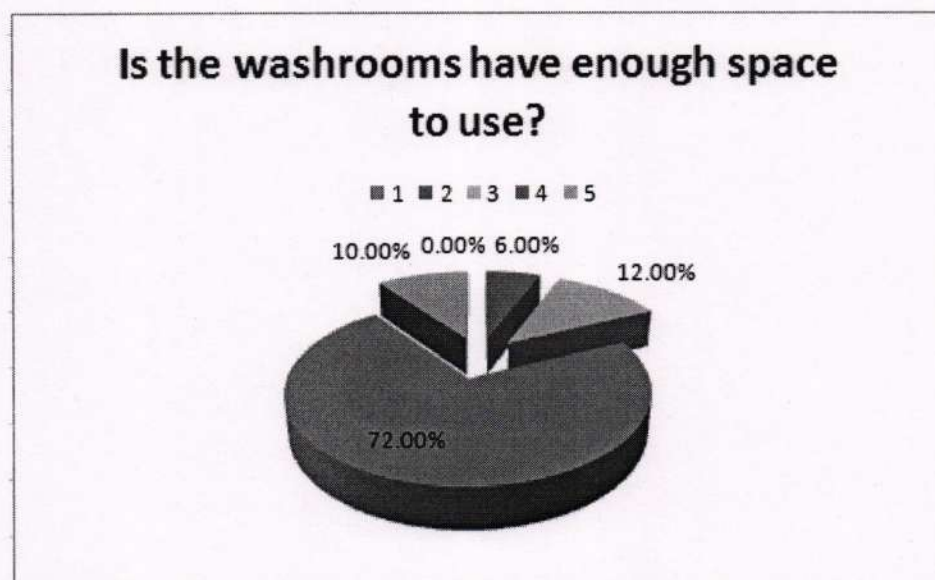
Interpretations: 18.00% students are strongly satisfied with hostel facilities, 40.00% said it is good, 38.00% said that they are average satisfied but 4.00% are not satisfied.




Principal
Guru Nanak College
BUDHLADA

Table 3.2-Is the washrooms have enough space to use?
(N=50)

Sr. No	Criteria	Number of Students	% age
1	Very Poor	0	0.00%
2	Poor	3	6.00%
3	Average	6	12.00%
4	Good	36	72.00%
5	Excellent	5	10.00%



Interpretation:-10.00% students are strongly agreed that washrooms have enough space, 72% said it is good, 12% said it is average but 6% said there is not enough space.

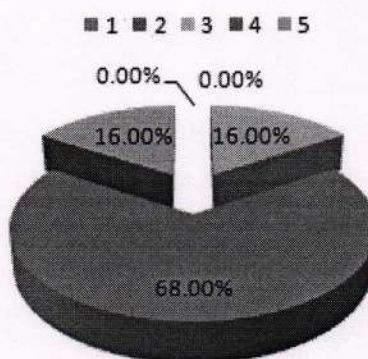


LSM
Principal
Guru Nanak College
BUDHLADA

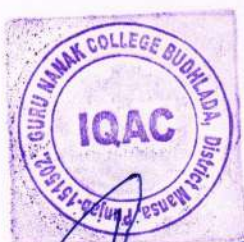
Table 3.3-Are you satisfied with the Cleanliness and tidiness? (N=50)

Sr. No	Criteria	Number of Students	% age
1	Very Poor	0	0.00%
2	Poor	0	0.00%
3	Average	8	16.00%
4	Good	34	68.00%
5	Excellent	8	16.00%

Are you satisfied with the Cleanliness and tidiness?



Interpretation: 16.00% students are strongly satisfied with Cleanliness and tidiness, 68.00% said it is good, 16.00% said that they are average satisfied.




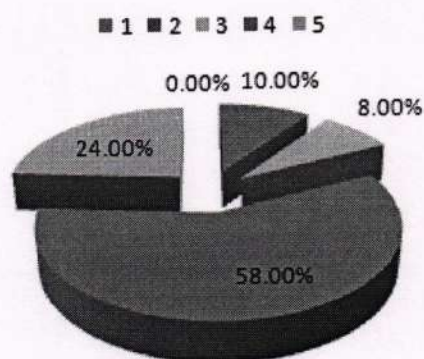

 Principal
 Guru Nanak College
 BUDHLADA

Table 3.4-Are you satisfied with the quality of furniture?(N=50)			
Sr. No	Criteria	Number of Students	% age
1	Very Poor	0	0.00%
2	Poor	5	10.00%
3	Average	4	8.00%
4	Good	29	58.00%
5	Excellent	12	24.00%

Are you satisfied with the quality of furniture?



Interpretation:-24.00% students are strongly satisfied with quality of furniture, 58.00% said it is good, 8.00% said that they are average satisfied but 10.00% are not satisfied.



[Signature]

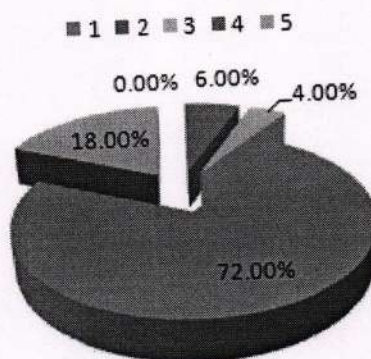


[Signature]
Principal
Guru Nanak College
BUDHLADA

Table 3.5-Are you satisfied with the size of rooms?(N=50)

Sr. No	Criteria	Number of Students	% age
1	Very Poor	0	0.00%
2	Poor	3	6.00%
3	Average	2	4.00%
4	Good	36	72.00%
5	Excellent	9	18.00%

Are you satisfied with the size of rooms?



Interpretation:-18.00% students are strongly satisfied with the size of rooms, 72.00% said it is good, 4.00% said that they are average satisfied but 6.00% are not satisfied.



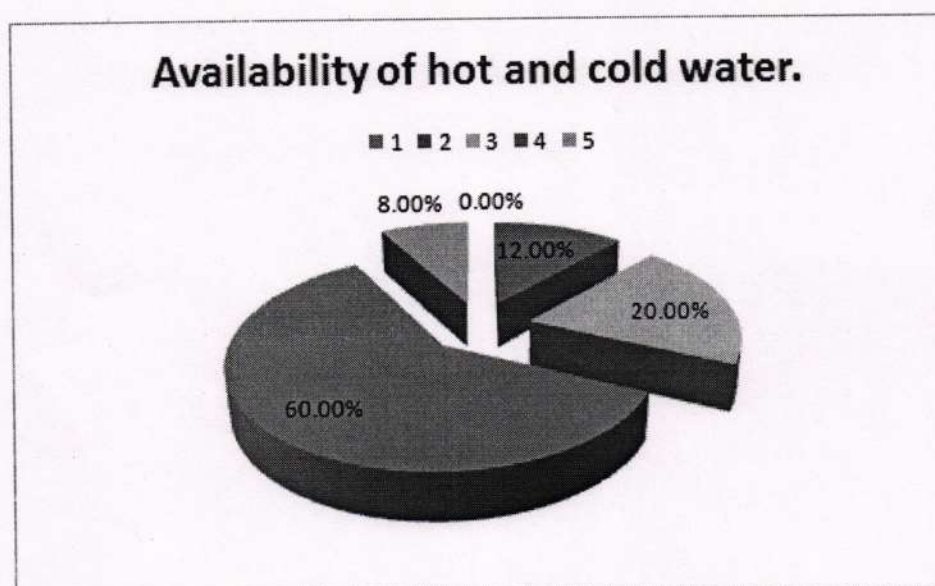
[Handwritten signature]



[Handwritten signature]
Principal
Guru Nanak College
BUDHLADA

Table 3.6-Availability of hot and cold water. (N=50)

Sr. No	Criteria	Number of Students	% age
1	Very Poor	0	0.00%
2	Poor	6	12.00%
3	Average	10	20.00%
4	Good	30	60.00%
5	Excellent	4	8.00%



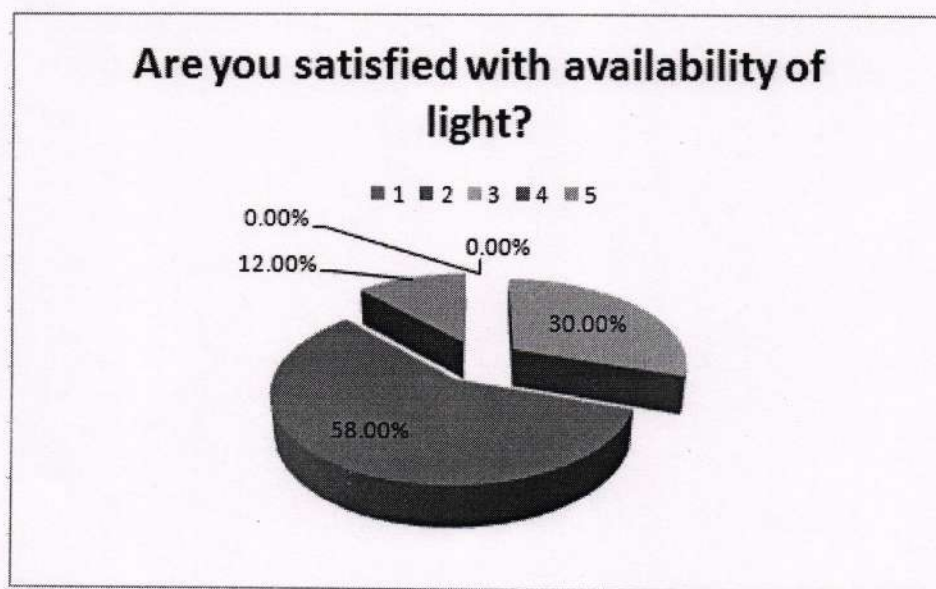
Interpretation:-8.00% availability of hot and cold water, 60.00% said it is good, 20.00% said that they are average satisfied but 12.00% are not satisfied.



Principal
Guru Nanak College
BUDHLADA

Table 3.7-Are you satisfied with availability of light?(N=50)

Sr. No	Criteria	Number of Students	% age
1	Very Poor	0	0.00%
2	Poor	0	0.00%
3	Average	15	30.00%
4	Good	29	58.00%
5	Excellent	6	12.00%



Interpretation:-12.00% students are satisfied with availability of lights, 58.00% said it is good, 30.00% said that they are average satisfied.



Asm
Principal
Guru Nanak College
BUDHLADA

3 (b) MESS FACILITIES (N=50)

Sr. No	Contents	Very Poor	Poor	Average	Good	Excellent
1.	Are you satisfied with the quality of food?	5	6	7	29	3
2.	Are you satisfied with Mess services?	8	4	18	14	6
3	Are you satisfied with the quality of drinking water?	2	5	23	15	5
4	Are you satisfied with the seating arrangement?	2	6	12	23	7
5	Indoor games are available for Entertainment.	3	7	15	20	5
6	Is there a variety of meal is available?	4	6	10	22	8
7	Timing of Mess is adequate.	4	4	15	18	9

As Br

Principal
Guru Nanak College
BUDHLADA



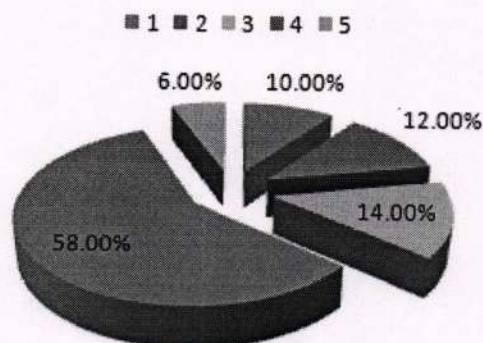
[Handwritten signature]



Table 3.1.1-Are you satisfied with the quality of food?(N=50)

Sr. No	Criteria	Number of Students	% age
1	Very Poor	5	10.00%
2	Poor	6	12.00%
3	Average	7	14.00%
4	Good	29	58.00%
5	Excellent	3	6.00%

Are you satisfied with the quality of food?



Interpretation:-6.00% students are satisfied with quality of food, 58.00% said it is good, 14.00% said that they are average satisfied but 22.00% are not satisfied.

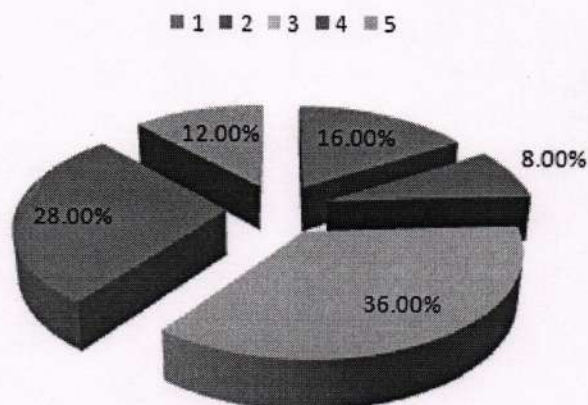


Principal
Guru Nanak College
BUDHLADA

Table 3.1.2-Are you satisfied with Mess services?(N=50)

Sr. No	Criteria	Number of Students	% age
1	Very Poor	8	16.00%
2	Poor	4	8.00%
3	Average	18	36.00%
4	Good	14	28.00%
5	Excellent	6	12.00%

Are you satisfied with Mess services?



Interpretation:-12.00% students are satisfied with Mess services, 28.00% said it is good, 36.00% said that they are average satisfied but 24.00% are not satisfied.

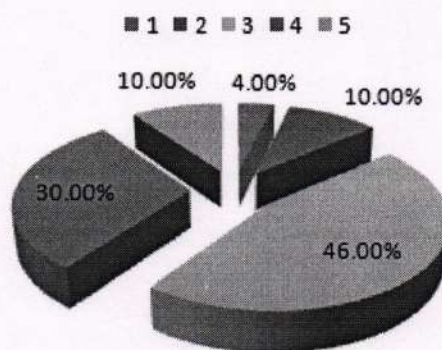


Principal
Principal
Guru Nanak College
BUDHLADA

Table 3.1.3-Are you satisfied with the quality of drinking water?(N=50)

Sr. No	Criteria	Number of Students	% age
1	Very Poor	2	4.00%
2	Poor	5	10.00%
3	Average	23	26.00%
4	Good	15	30.00%
5	Excellent	5	10.00%

Are you satisfied with the quality of drinking water?



Interpretation:-10.00% students are satisfied with quality of drinking water, 30.00% said it is good, 26.00% said that they are average satisfied but 14.00% are not satisfied.

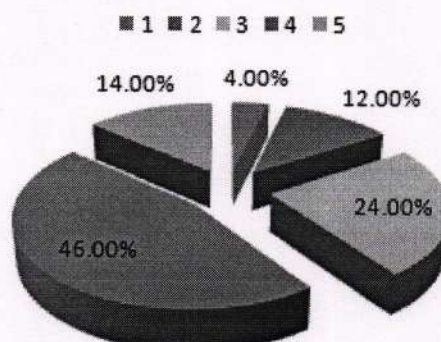


[Signature]
Principal
Guru Nanak College
BUDHLADA

Table 3.1.4-Are you satisfied with the seating arrangement? N=50)

Sr. No	Criteria	Number of Students	% age
1	Very Poor	2	4.00%
2	Poor	6	12.00%
3	Average	12	24.00%
4	Good	23	46.00%
5	Excellent	7	14.00%

Are you satisfied with the seating arrangement?



Interpretation:-14.00% students are satisfied with the seating arrangement, 46.00% said it is good, 24.00% said that they are average satisfied but 16.00% are not satisfied.

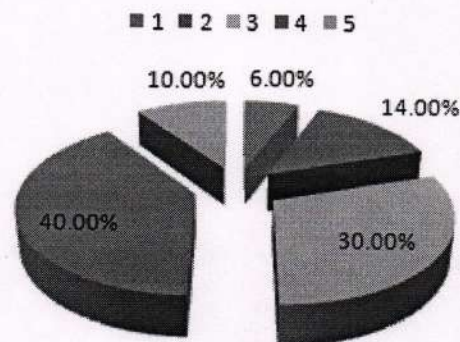


[Signature]
Principal
Guru Nanak College
BUDHLADA

**Table 3.1.5-Indoor games are available for
Entertainment.(N=50)**

Sr. No	Criteria	Number of Students	% age
1	Very Poor	3	6.00%
2	Poor	7	14.00%
3	Average	15	30.00%
4	Good	20	40.00%
5	Excellent	5	10.00%

**Indoor games are available for
Entertainment.**



Interpretation:-10.00% students are satisfied with Indoor games are available for Entertainment, 40.00% said it is good, 30.00% said that they are average satisfied but 20.00% are not satisfied.



JS
Principal
Guru Nanak College
BUDHLADA

Table 3.1.6-Is there a variety of meal is available?(N=50)

Sr. No	Criteria	Number of Students	% age
1	Very Poor	4	8.00%
2	Poor	6	12.00%
3	Average	10	20.00%
4	Good	22	44.00%
5	Excellent	8	16.00%

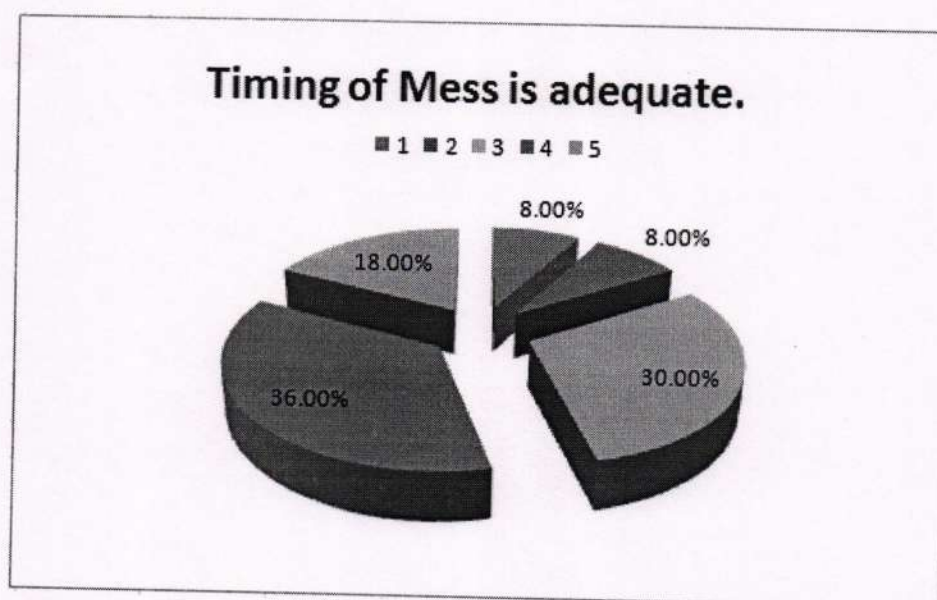


Interpretation:-16.00% students are satisfied with the variety of meal is available, 44.00% said it is good, 20.00% said that they are average satisfied but 20.00% are not satisfied.




Principal
Guru Nanak College
BUDHLADA

Table 3.1.7-Timing of Mess is adequate.(N=50)			
Sr. No	Criteria	Number of Students	% age
1	Very Poor	4	8.00%
2	Poor	4	8.00%
3	Average	15	30.00%
4	Good	18	36.00%
5	Excellent	9	18.00%



Interpretation:-18.00% satisfied with the timing of mess is adequate, 36.00% said it is good, 30.00% said that they are average satisfied but 16.00% are not satisfied.



[Signature]



[Signature]
Principal
Guru Nanak College
BUDHLADA

SECTIONC: WARDEN AND STAFF (N=50)

Sr. No	Contents	Very Poor	Poor	Average	Good	Excellent
1.	Your problems are solved by warden regularly.	2	3	8	27	10
2.	Warden regularly visit your rooms	3	5	12	25	5
3	Are you satisfied with the behavior of warden?	4	6	15	18	7

Handwritten signature in green ink

Principal
Guru Nanak College
BUDHLADA

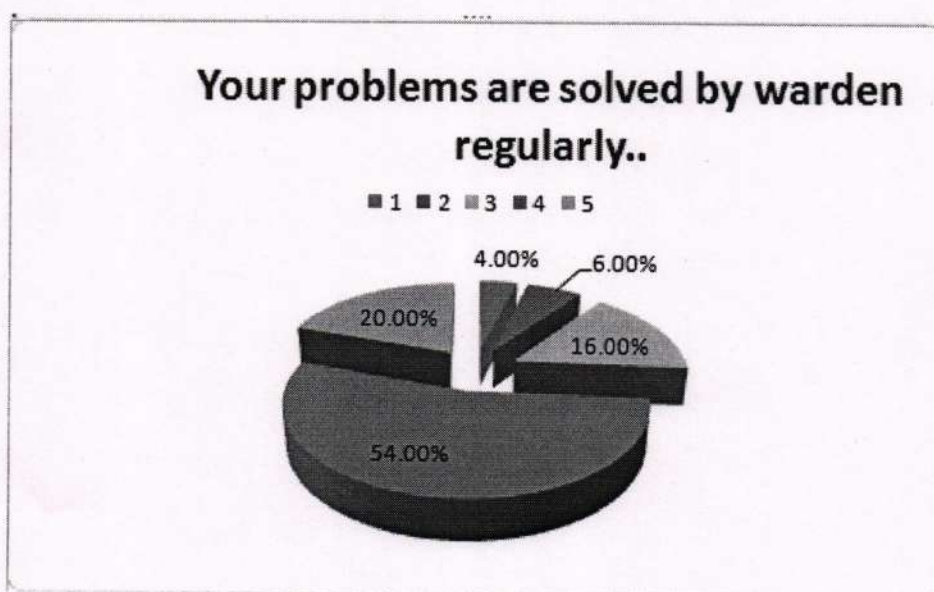


Handwritten signature in blue ink



**Table 3.2.1 Your problems are solved by warden
regularly(N=50)**

Criteria	No. of students	Percentage
Very Poor	2	4.00%
Poor	3	6.00%
Average	8	16.00%
Good	27	54.00%
Excellent	10	20.00%



Interpretation:-54.00% students said problems are solved by warden regularly, 10.0% said it is excellent, 16.00% said that they are average satisfied but 4.00% are strongly not satisfied.



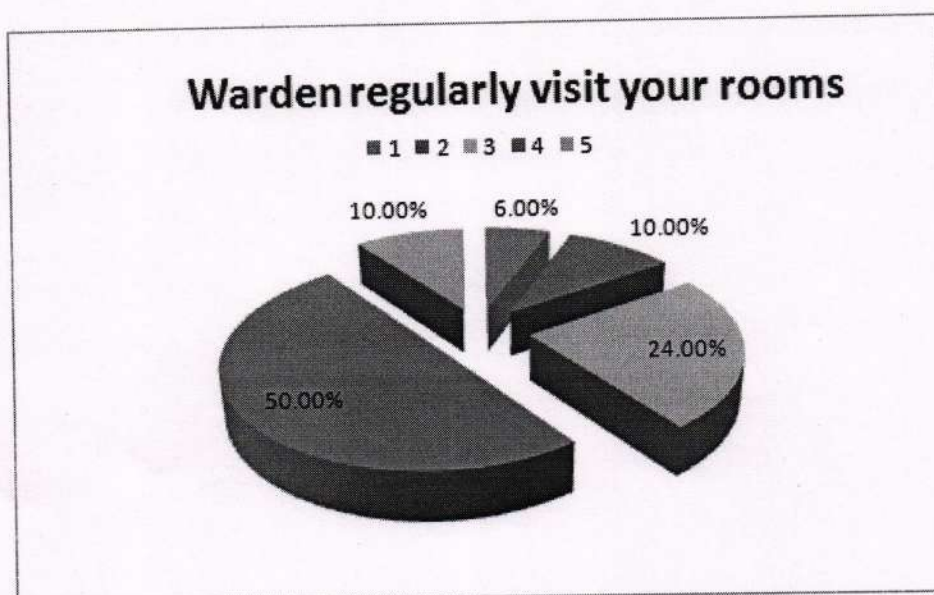
[Signature]



[Signature]
Principal
Guru Nanak College
BUDHLADA

Table 3.2.2 Warden regularly visits your rooms. (N=50)

Criteria	No. of students	Percentage
Very Poor	3	6.00%
Poor	5	10.00%
Average	12	24.00%
Good	25	50.00%
Excellent	5	10.00%



Interpretation:-6.00% students said warden visit their rooms rarely, 10.00% said it happens sometime. 24.00% said that they are average satisfied, 50% students said she visit regularly and 10% said that she every day visit.

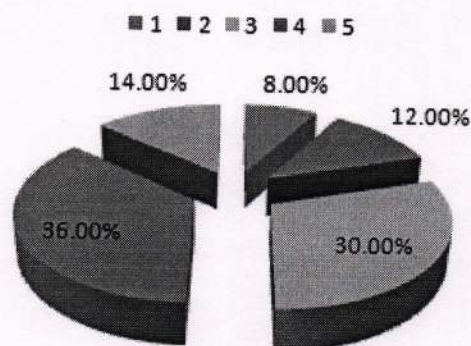



Principal
Guru Nanak College
BUDHLADA

Table 3.2.3 Are you satisfied with the behavior of warden?(N=50)

Criteria	No. of students	Percentage
Very Poor	4	8.00%
Poor	6	12.00%
Average	15	30.00%
Good	18	36.00%
Excellent	7	14.00%

Are you satisfied with the behavior of warden?



Interpretation:-8.00% students are not satisfied with the behavior of warden, 30.00% said that they are average satisfied but 14.00% are strongly satisfied.



Principal
Principal
Guru Nanak College
BUDHLADA

4. ANALYSIS OF STUDENT'S FEED BACK FORM ON ADMINISTRATION (N=1800)

1. Are you satisfied with the Behavior and communications of Non-teaching and administrative office?	yes	1678	No	122
2. Are you satisfied with the services and facilities of college?	yes	1489	No	311
3. Is the campus Eco-friendly?	yes	1333	No	467
4. Are you provided with enough and pure drinking water	yes	1455	No	345
5. Are you satisfied with the sports and culture facilities?	yes	1399	No	401
6. Are you satisfied with the facilities of transport and other related services?	yes	1386	No	414
7. Are you aware of the "NCC and NSS" activities in the college?	yes	1565	No	235
8. Are you aware of "Anti-Sexual Harassment Cell" and "Nanhi- chaan", "Anti-Ragging", "welfare" etc.?	yes	1585	No	215

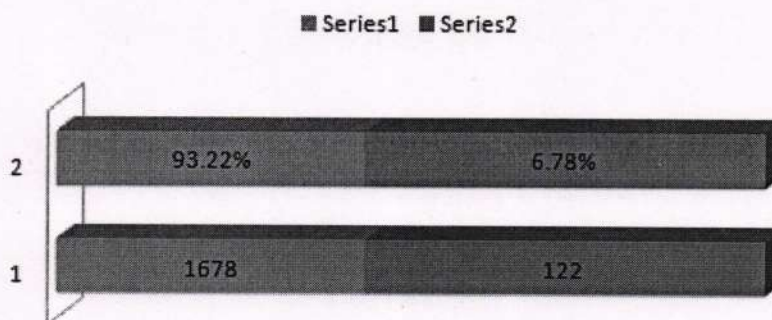



Principal
Guru Nanak College
BUDHLADA

Table:4.1 Are you satisfied with the Behavior and communications of Non-teaching and administrative office? .N=1800)

Criteria	No. of students	Percentage
Yes	1678	93.22%
No	122	6.78%

Are you satisfied with the Behavior and communications of Non-teaching and administrative office?



Interpretation:-93.22% students are satisfied with the behavior and communications of Non-teaching and administrative office but 6.78% are not satisfied.



[Handwritten signature]

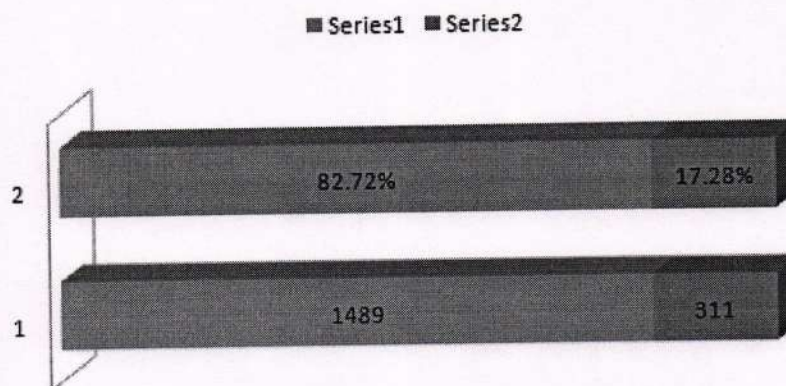


[Handwritten signature]
Principal
Guru Nanak College
BUDHLADA

1. **Table: 4.2 are you satisfied with the services and facilities of college? (N=1800)**

Criteria	No. of students	Percentage
Yes	1489	82.72%
No	311	17.28%

are you satisfied with the services and facilities of college?



Interpretation:-82.72% students are satisfied with services and facilities of the college and 17.28% are not satisfied.

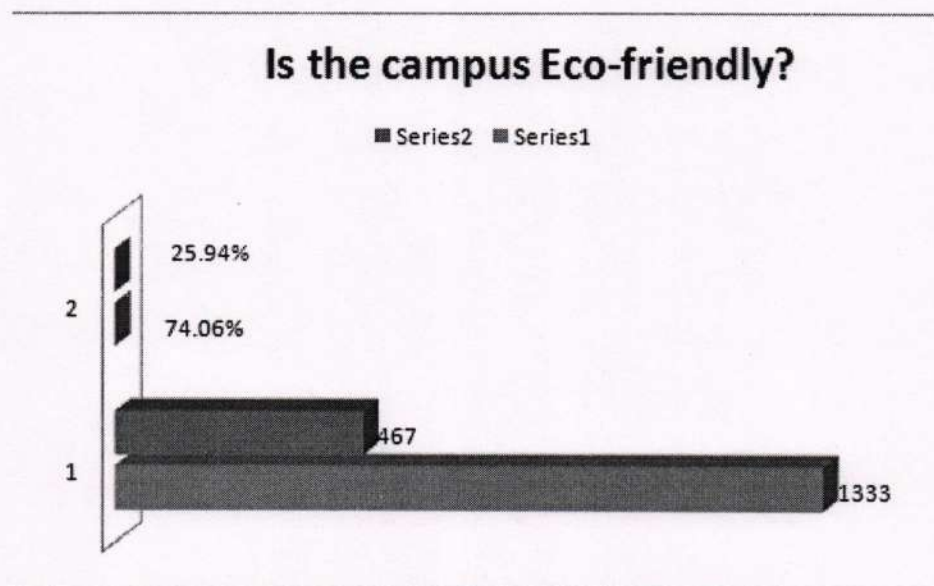


[Signature]



[Signature]
Principal
Guru Nanak College
BUDHLADA

Table: 4.3 Is the campus Eco-friendly?(N=1800)		
Criteria	No. of students	Percentage
Yes	1333	74.06%
No	467	25.94%



Interpretation:-74.06% students think that campus is Eco-friendly but 25.94% are not satisfied.



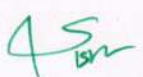
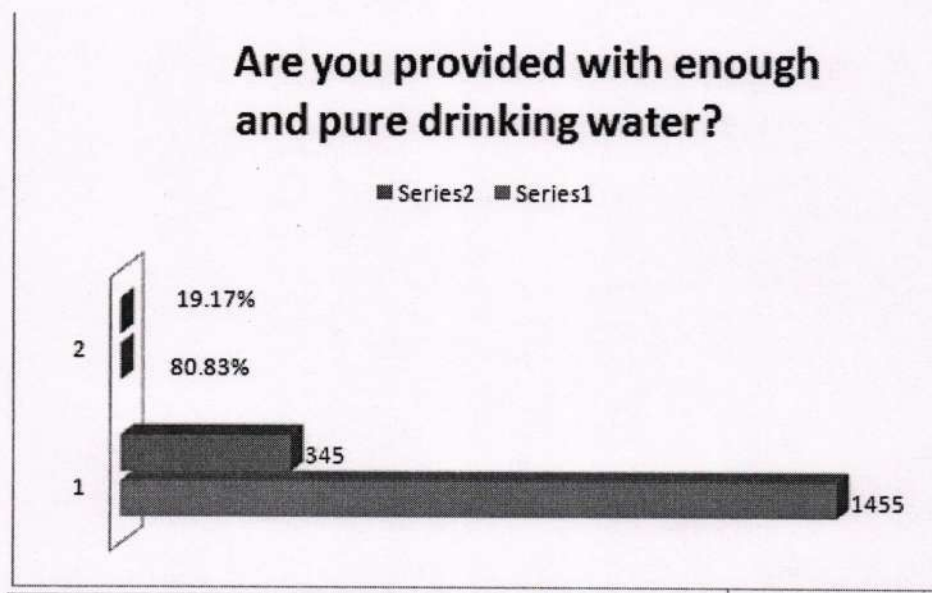

 Principal
 Guru Nanak College
 BUDHLADA

Table: 4.4 Are you provided with enough and pure drinking water?(N=1800)		
Criteria	No. of students	Percentage
Yes	1455	80.83%
No	345	19.17%

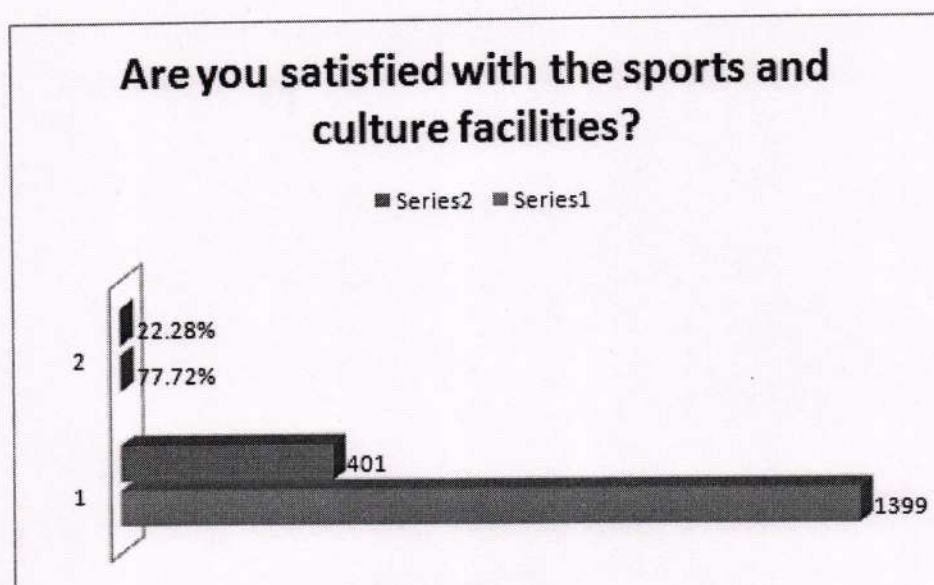


Interpretation:-80.83% students are satisfied with provided with enough and pure drinking water but 19.17% are not satisfied.




 Principal
 Guru Nanak College
 BUDHLADA

Table: 4.5 Are you satisfied with the sports and culture facilities? (N=1800)		
Criteria	No. of students	Percentage
Yes	1399	77.72%
No	401	22.28%



Interpretation:-77.72% students are satisfied with the sports and culture facilities provided by college but 22.28% are not satisfied.



[Handwritten signature]

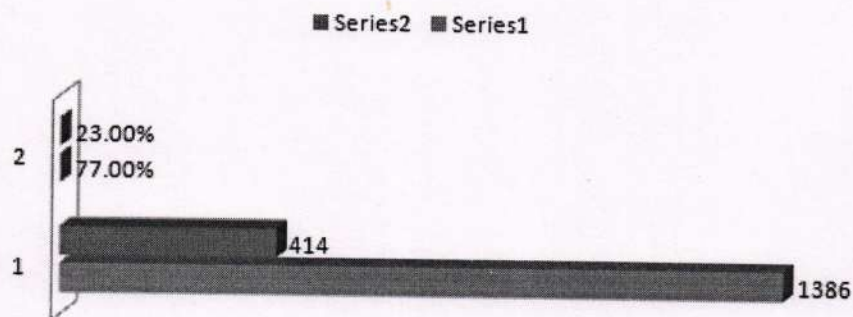


45
Principal
Guru Nanak College
BUDHLADA

Table: 4.6 Are you satisfied with the transport facility and other related services? (N=1800)

Criteria	No. of students	Percentage
Yes	1386	77.00%
No	414	23.00%

Are you satisfied with the facilities of transport and other related services?



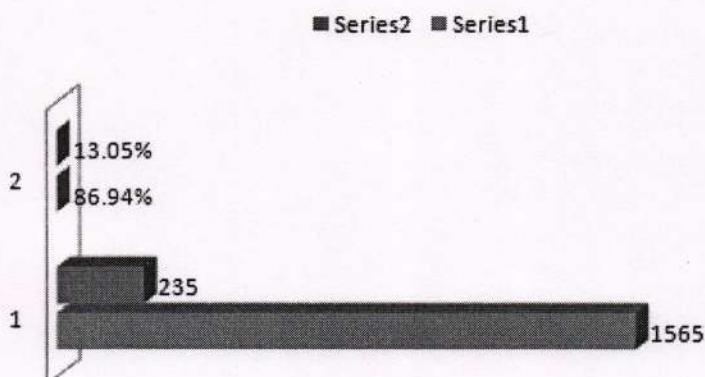
Interpretation:-77.00% students are satisfied with the transport facility & other services and 23% are not satisfied.



AS
Principal
Guru Nanak College
BUDHLADA

Table: 4.7 Are you aware of the “NCC and NSS” activities in the college? (N=1800)		
Criteria	No. of students	Percentage
Yes	1565	86.94%
No	235	13.05%

Are you aware of the “NCC and NSS” activities in the college



Interpretation:- it is analyzed from the above table that 86.94% students are known about NCC and NSS activities.



JS
Principal
Guru Nanak College
BUDHLADA

Table: 4.8 Are you aware of “Anti-Sexual Harassment Cell”, “Nanhi-chaan”, “Anti-Ragging”, “welfare” etc.? (N=1800)

Criteria	No. of students	Percentage
Yes	1585	88.05%
No	215	11.94%

Are you aware of “Anti-Sexual Harassment Cell” and “Nanhi-chaan”, “Anti-Ragging”, “welfare” etc.?

■ Series2 ■ Series1



Interpretation: it is analyzed from the above table that 88.05% students are well known about college cells and 11.94% are not known.



AS
Principal,
Guru Nanak College
BUDHLADA

5. Library: After Student survey report it is found that a number of students visit the library regularly and some visit occasionally.

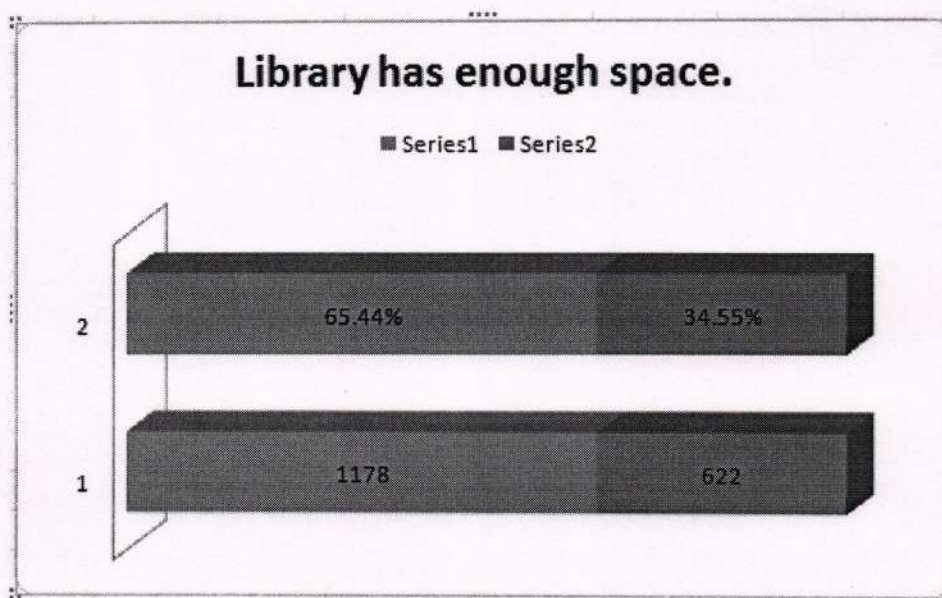
This section includes 6 questions. The students that regularly & occasionally visit the library give their answers about questions that are given in the table.

1) Library has enough space.	Regular	1178	Occasionally	622
2) Are the required numbers of titles and journals available in the library?	Regular	1119	Occasionally	681
3) Are you satisfied with the cataloguing and arrangement of books in the library?	Regular	1107	Occasionally	693
4) Are you satisfied with the availability of reading space in the library?	Regular	1100	Occasionally	700
5) Is the library staff co-operative and helpful?	Regular	1300	Occasionally	500
6) Are you satisfied with the Opening and Closing time of Library?	Regular	1289	Occasionally	511




Principal
Guru Nanak College
BUDHLADA

Table: 5.1- Library has enough space.		
Criteria	No. of students	Percentage
Yes	1178	65.44%
No	622	34.55%



Interpretation:-65.44% students said Library has enough space but 34.55% are not satisfied.




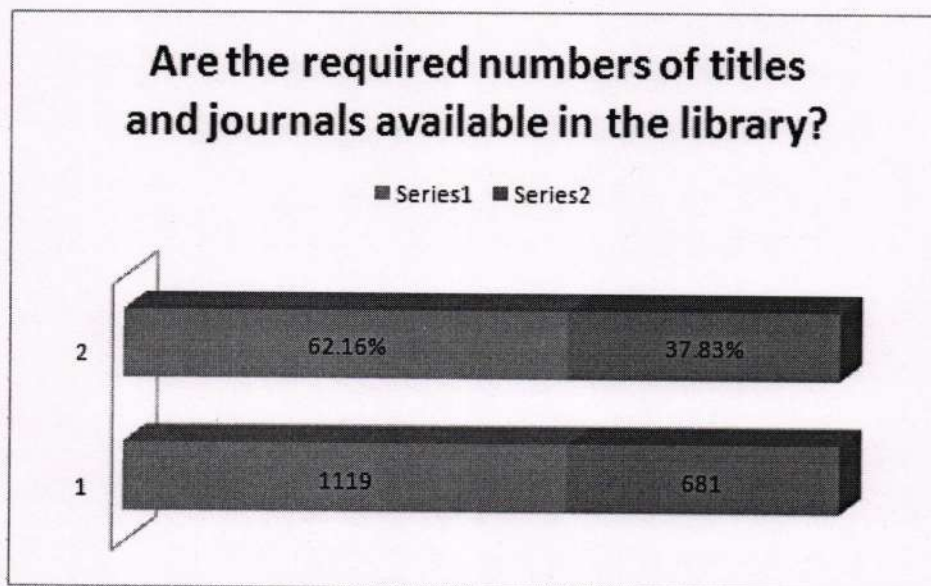

 Principal
 Guru Nanak College
 BUDHLADA

Table: 5.2- Are the required numbers of titles and journals available in the library?

Criteria	No. of students	Percentage
Yes	1119	62.16%
No	681	37.83%



Interpretation:-62.16% students said that the required numbers of titles and journal are available in library but 37.83% are not available.




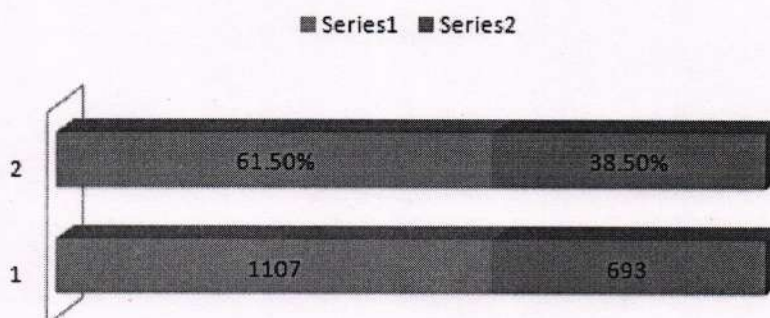

 Principal
 Guru Nanak College
 BUDHLADA

Table: 5.3 Are you satisfied with the cataloguing and arrangement of books in the library?

Criteria	No. of students	Percentage
Yes	1107	61.50%
No	693	38.50%

Are you satisfied with the cataloguing and arrangement of books in the library?



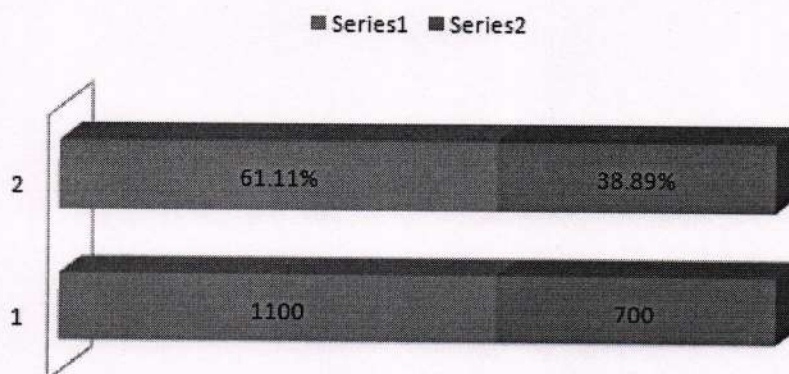
Interpretation:-61.50% students are satisfied with the cataloguing and arrangement of books in the library but 38.50% are not satisfied.



AS
Principal
Guru Nanak College
BUDHLADA

Table: 5.4 Are you satisfied with the availability of reading space in the library?		
Criteria	No. of students	Percentage
Yes	1100	61.11%
No	700	38.89%

Are you satisfied with the availability of reading space in the library?

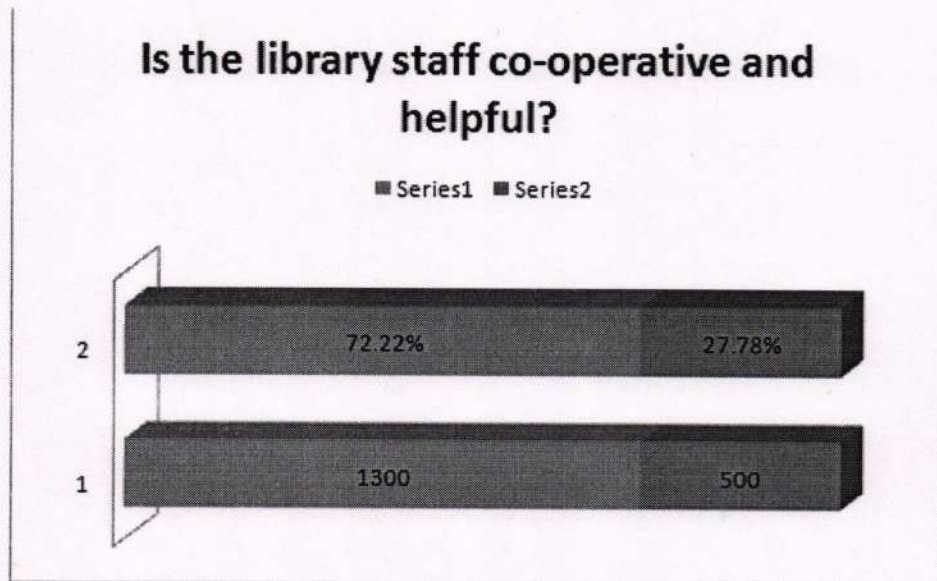


Interpretation:-61.11% students are satisfied with the availability of reading space in the library but 38.89% are not satisfied.



45
Principal
Guru Nanak College
BUDHLADA

Table:5.5 Is the library staff co-operative and helpful?		
Criteria	No. of students	Percentage
Yes	1300	72.22%
No	500	27.78%



Interpretation:-72.22%studentsare satisfied with the library staff co-operative and helpful but 27.78% are not satisfied.




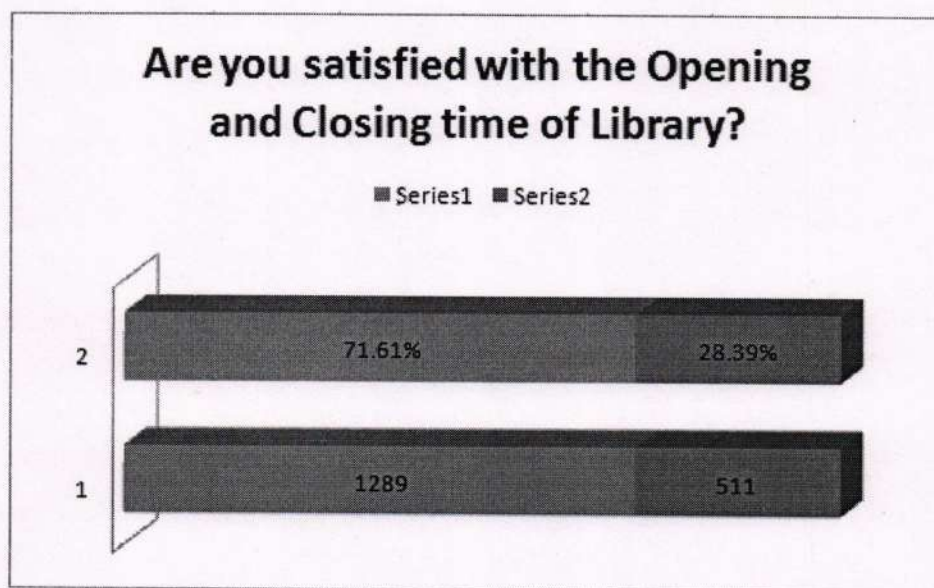

 Principal
 Guru Nanak College
 BUDHLADA

Table: 5.6 Are you satisfied with the Opening and Closing time of Library?		
Criteria	No. of students	Percentage
Yes	1289	71.61%
No	511	28.39%



Interpretation:-71.61% students are satisfied with the Opening and Closing time of Library but 28.39% are not satisfied.



45
BN
Principal
Guru Nanak College
BUDHLADA